

Available Drivers

- AB Bulletin 900 Temp Controllers
- AB Suite: DF1 Serial (Full & Half Duplex), DH+/DH-485, MicroLogix, PLC5, SLC5/05, ControlLogix, CompactLogix, Flexlogix Ethernet including 1761-NET-ENI (NO RS Linx Req'd!)
- Advanced Simulator
- Analog Devices 6B
- Aromat Serial & Ethernet
- Automation Direct Serial DirectNet, K-Sequence & Ethernet (ECOM & EBC)
- Bailey Fisher & Porter MicroDCI
- BacNET Ethernet
- Beckhoff TwinCAT Ethernet (Q109)
- Busware Ethernet I/O
- Contrex CX1000 & M Series
- Cutler Hammer D50/100
- DDE Server to OPC Client Bridge
- DeviceNet
- DNP 3.0 Suite - Serial + Ethernet
- Fuji Flex PLCs
- GE SRTP or EGD Ethernet & Focas1 Ethernet
- GE CCM, SNP & SNP-X Serial
- Honeywell UDC 3000/3300 & HC900
- Idec
- IoTech PointScan 100
- Mitsubishi FX Programming Port & FX-Net
- Mitsubishi A/Q/QnA Series (Serial & Ethernet)
- Modbus Suite: Serial RTU & ASCII Master, Serial RTU Slave, Modbus Plus, Modbus TCP/IP Ethernet Master/Slave & Bridging
- Omron Suite: Hostlink & FINS Serial, FINS Ethernet & Gateway, Temp. Controllers
- OPC Client Driver
- Optimization OptiLogic
- Oracle MES/MOC Connector
- Partlow ASCII
- Philips PC8/PC20
- Profibus
- Sattbus & Sattbus Ethernet
- Siemens Suite: S5 AS-511 & 3964R, S7-200 PPI & Ethernet, S7-300/400 Ethernet & MPI (serial), S7 Ethernet Slave
- Simatic/TI 5x5 Ethernet or Serial
- Simatic/TI TIWAY Serial
- Sixnet Ethernet I/O
- SquareD Serial
- Telemecanique Unitelway
- Thermowestronics Data Acq. Systems
- Torque Tool Ethernet Driver
- Toyopuc PC2 Serial & PC2/PC3 Ethernet
- Toshiba Serial & Ethernet
- Triconex TSAA Ethernet
- User Configurable Driver (UCON)
- Yaskawa MemoBus Serial, Plus & MP Ethernet
- Yokogawa DX100/200, DXF, & Darwin-Serial+Ethernet, YS100 Serial
- Wonderware InTouch Client Driver

TOP Server is the choice of users, integrators, and channel partners for challenging device integration applications because of its flexibility and scalability combined with Software Toolbox' support and ability to deliver off-the-shelf software solutions beyond just the driver.

With over 10,000 field installations in over 100 countries, there are TOP Server installations with over 100,000 tags in field operation today in mission critical applications in all industries.

Features:

- OPC DA 1.x, 2.x, 3.x Interfaces with OPC UA Support to be released Q2-2009.
- OPC Interoperability & Independent Lab Certified
- Single interface into client applications regardless of number of drivers used.
- Easily add drivers as needed through plug-in architecture
- Native Wonderware & Intellution Interfaces speed integration
- Multi-threaded support leverages multi-processor and multi-core processor computer power.
- Support for Windows XP SP2, 2003 Server, 2000, and NT including running as a service
- Support for Windows Vista (with UAC turned off and not running as service, full support in Q2-2009)
- Ethernet encapsulation/terminal server devices and modems supported on most serial drivers for wide ranging options
- Suite licenses for AB, GE, Mitsubishi, Omron, Modicon, Siemens, & Yokogawa drivers combines all drivers for a single make of PLC into a single purchase, which provides for very affordable licensing.
- Software keyed license is a per computer license regardless of # of devices or tags, with "Lite" licenses available for competitive or special situations
- Cost effective - most drivers or suites are only \$795

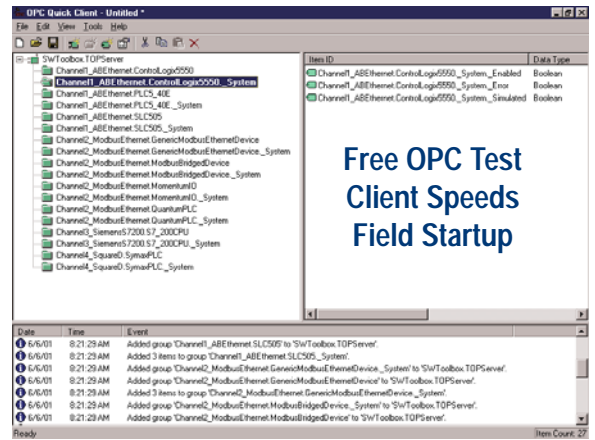


TOP Server brings you the best-in-class driver and OPC technology of Kepware combined with Software Toolbox's best-in-class technical support and value-added software that leverages Kepware's drivers. When you buy from Software Toolbox you get a single point of responsibility for software solutions beyond just the OPC driver.

Software Toolbox TOP Servers - Your Best Value in Communications Software

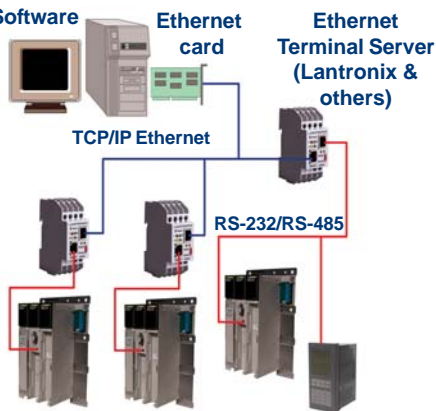
Flexible Features Reduce Your Total Life Cycle Cost

- Support for OPC, FastDDE, Suitelink, AdvanceDDE, and DDE software interfaces reduces integration costs
- NT / 2000 / 2003 / XP Service support for unattended startup
- Dial-Up Modem Support in Serial Drivers
- Automatic Tag Database Generation - reads available tags from hardware itself where available or programming software and automatically configures the OPC server - available in GE Fanuc, Idec, Modbus, AB ControlLogix, Yokogawa & Thermowestronics drivers. i.e import AB ControlLogix L5K tags directly from the PLC.
- Dynamic Tag Creation - No double tag database - pass the TOP server the hardware addresses you want to read from your client (i.e. InTouch)
- Tag Import/Export - bring in data from CSV files to speed configuration or sharing with other applications
- Multi-threaded 32-bit native design allows us to maximize your total throughput for large systems
- Common user interface to learn reduces training & engineering costs
- Drag & Drop Copying of Tags & Devices - configure one device with all your tags, then copy and paste it to other devices.
- Extensive diagnostic tools at the protocol and OPC level reduce field startup costs
- Free OPC Quick Client provides a known entity OPC client for quick field deployment & testing
- Extensive built in system tags allow the client application (including InTouch) to reconfigure the driver on the go - including enabling and disabling devices.
- Security built in allows you to control who can change the driver configuration.



Unique Driver Capabilities Expand Your Range of Application Solutions

TOP Server Software



Ethernet Encapsulation on Serial Drivers - use Serial to Ethernet Converters/ Terminal Servers and other similar devices to put your legacy hardware on Ethernet.

OPC Server Manager software option provides slow polling, automated redundancy management & dynamic IP address cellular radio support.

Modbus Ethernet Gateway Support - works with Modicon Ethernet to Modbus/ Modbus Plus Gateway hardware to bridge to legacy serial and proprietary networks.

Modbus Ethernet I/O Support - our Modbus Ethernet driver has been tested with a variety of Ethernet I/O systems that utilize Modbus Ethernet.

AB ControlLogix & ControlLogix Gateway Support - connect to AB DH+ & ControlNet downstream networks via Ethernet using AB's ControlLogix Gateway hardware. ControlLogix native tag addressing supported (i.e. tag based).

LinkMaster Gateway and OPC DX software options provide drag & drop bridging of OPC data from one OPC Server to another.

Quality Products & Support From Start To Finish

- Development team with combined 20+ years driver development experience
- Extensive testing with hardware and a range of client applications
- OPC Data Access 2.05 & 3.0 Specification Compliance Tested & Interoperability Tested for 8 years!
- Expert product support & application expertise
- Extensive documentation including free connectivity guide for HMI integration
- Thousands of licenses in use globally
- No cumbersome hardware keys - flexible and friendly software keying mechanism, including license transfer utility.



Contacting Us:

For more information or a free demo, contact your local Software Toolbox products distributor or visit www.ToolboxOPC.com. To speak with one of our engineers or locate a distributor near you please call +1-704-849-2773 or send an email to tech@softwaretoolbox.com.